

WCPFC mixed fishery approach: Progress and key decision points

WCPFC22-2025-26 – rev01

SPC/OFP

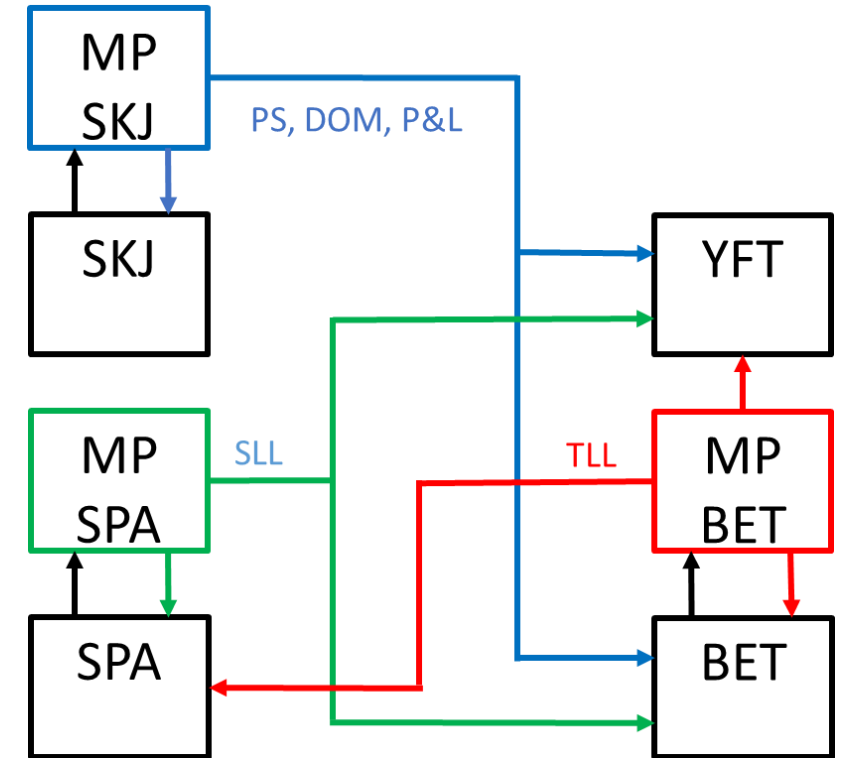
Western and Central Pacific Fisheries Commission:
Twenty-Second Regular Session

Manila, Philippines, 1-5 December 2025

Mixed Fisheries Approach

	Tropical Longline	Southern Longline	Northern Longline	Pole & Line	Purse Seine	Troll	Other
Skipjack	-	-	-	0.09	0.83	-	0.08
South Pacific albacore	0.12	0.81	-	-	-	0.07	-
Bigeye	0.27	0.05	0.06	0.01	0.45	-	0.15
Yellowfin	0.08	0.02	0.01	0.03	0.55	-	0.31

- Adoption of a BET management procedure (MP) is scheduled for 2025, or failing that, 2026
- No specific MP for YFT under the proposed mixed fishery approach



Mean catch proportion (2020-22, by weight) by gear type for the 4 main tuna stocks in the WCPFC-CA (South Pacific albacore for WCPFC-CA south of the equator only)

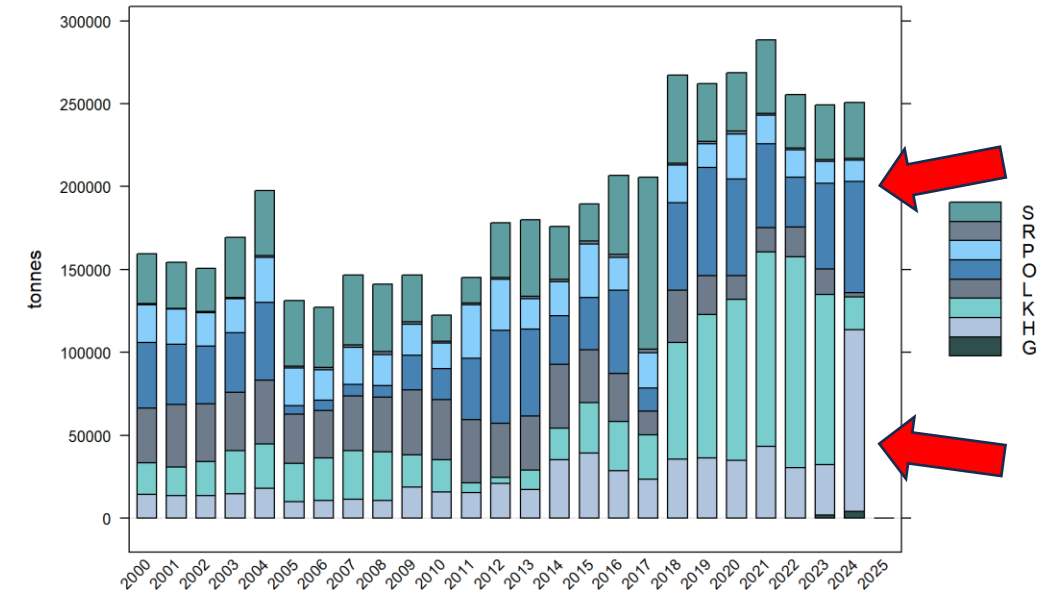
Guidance required to progress mixed fishery approach

- Management Objectives
 - Current objectives for BET and YFT cannot be met simultaneously
 - Achieving 2012-15 levels for BET implies achieving lower values for YFT
 - Sequenced approach to developing TRPs for BET and YFT
 - May be defined as a threshold TRP
 - YFT management objectives and the range of performance indicators to be provided and whether additional indicators would help inform management decision making;
 - Indication of candidate levels of key indicators (e.g. catches, catch rates) that would be desirable relative to historical levels.
- Performance indicators
 - Retain the 6 PIs and also keep consistent for YFT – further consideration of options for PIs.

Information required to progress BET MP development

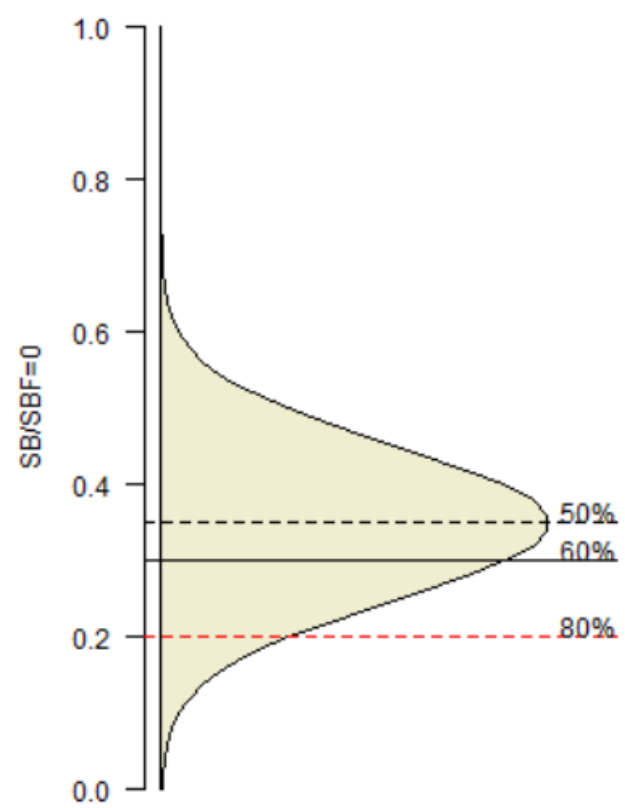
- Sensitivity analyses for YFT catches in areas outside of MP control
 - Around 30% YFT catch taken in fisheries of ID PH VN – large component in archipelagic waters
 - Variable fishery dynamics and catch reporting challenges
 - Recent trends indicate progressive reduction in PL and LL fishing
 - Switch to smaller scale operations (handline, troll, ...)

- Proposed approach
 - Develop sensitivity analyses across a range of scenarios for recent averages to historical highs
 - Taking account of recent management measures in ID



Further considerations

- Exceptional circumstances
 - Potential for fishing levels set by an MP for one stock to exceed levels required to reach objectives for another stock
 - To the extent possible, accounted for in the testing of the mixed fishery approach
 - Importance of effective monitoring
- MP sequence
 - Once mixed fishery approach implemented – no one MP will take precedence over another
- Mechanisms for strategic guidance from the Commission
 - BET MP scheduled for adoption at WCPFC23
 - SC22 in August
 - Potential for an SMD



Mixed Fishery Approach

	Tropical Longline	Southern Longline	Northern Longline	Pole & Line	Purse Seine	Troll	Other
Skipjack	-	-	-	0.09	0.83	-	0.08
South Pacific albacore	0.12	0.81	-	-	-	0.07	-
Bigeye	0.27	0.05	0.06	0.01	0.45	-	0.15
Yellowfin	0.08	0.02	0.01	0.03	0.55	-	0.31

Mean catch proportion (2020-22, by weight) by gear type for the 4 main tuna stocks in the WCPFC-CA (South Pacific albacore for WCPFC-CA south of the equator only)

Mixed Fisheries controlled by single species MPs

